

A NEW INNOVATIVE WOOD-FIBRE BOARD FOR INTERNAL WALLS

SMOOTH SEAMLESS FINISH
ENVIRONMENTALLY FRIENDLY
EASY & QUICK TO FIT
SUSTAINABLE
SUITABLE IN BATHROOM* & KITCHEN
HIGH TEMPERATURE & MOISTURE
RESISTANCE
FIRE RATED UPGRADE AVAILABLE

NEW CONCEPT WALL FROM SCANDINAVIAN TRADING LTD: NORDIC PRO WALL

THE WORLD'S FIRST PURE WOOD-BASED
WALL BOARD THAT GIVES A SMOOTH
SEAMLESS WALL IN RECORD TIME!
EASY AND QUICK FITTING ON STUDS OR
DIRECTLY ON WALL.

The Nordic PRO wall board are supplied primed and ready for two coats of paint - no skimming needed!

Nordic PRO Wall conform to climate zone 2 and deal well with temperature and humidity variations.

* Suitable for bathroom use, but not inside shower cubicles or areas with direct water.

Simple and quick to fit on vertical or horizontal joists or on existing wall. Perfect for both new built walls and refurb.

The boards are suitable for painting and wall papering.

Fixing of board with screws or nail/staple gun. Screw-hold for fixings has a pull value of 150kg which means heavy screens, shelving and paintings can be screwed on directly on to wall.

We stock board length 2420mm and can supply on order 2800 mm. The boards are 620 mm wide and 11 mm thick. Density is 900 kg/m³.



NORDIC PRO WALL

HAS FULL CERTIFICATIONS REQUIRED BY UK REGULATIONS

BREEAM[®] NOR

Own declaration HEA 02, BREEAM NOR.

ISO 14001. EPD. PEFC.

Nordic Swan Ecolabel.

SINTEF technical approval.

Internal climate test.

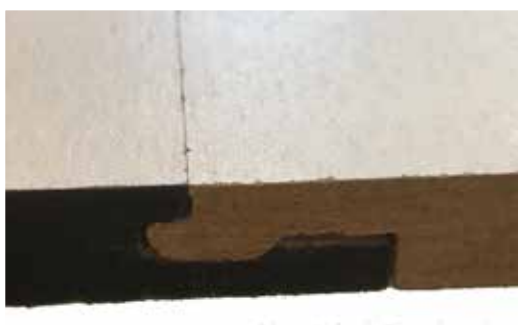
Asthma and allergy recommended.



Asthma & Allergy
Association Norway



THE ENVIRONMENTALLY FRIENDLY WAY TO A SMOOTH WALL



PRODUCT INFORMATION

Nordic PRO wall is produced in Norway by Huntonit using the cleanest of raw materials from Norwegian sustainable forests.

After years of research the new smooth wall boards are ready for the UK market. Correct dosage of a hydro wax makes the new PRO wall more resistant to moisture and temperature changes than our standard wall boards.

The boards surface have 3 coats of water based acrylic primer, making them ready for painting or wall papering. The primed boards have fire rating D-s2-d0, while we can offer a 2-coat upgrade paint that improve fire rating to B-s1,d0. The boards can be used in REI-30 and REI60 walls.

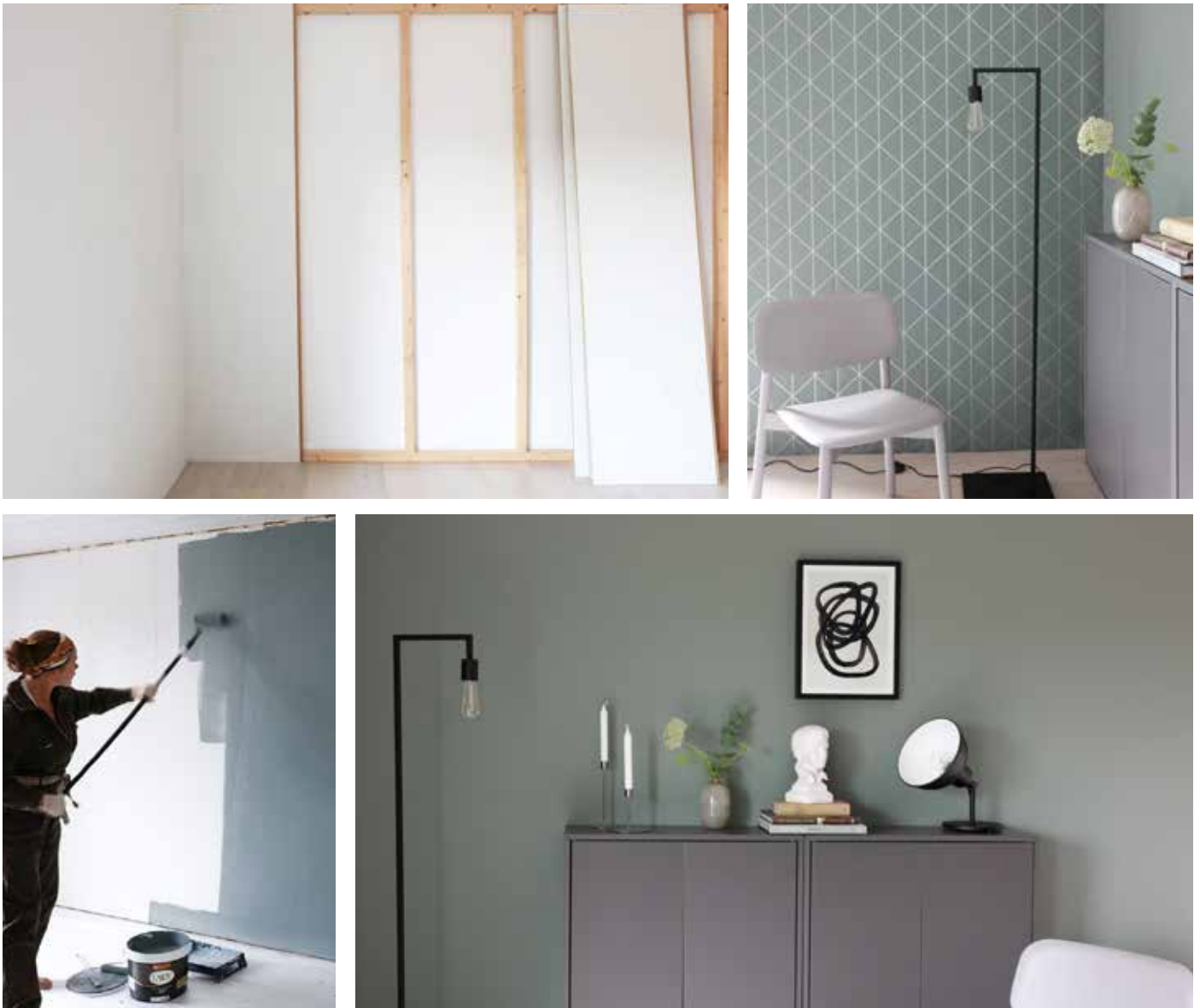
The PRO wall is easy to repair after damage, or repainting when needed.

ENVIRONMENTALLY FRIENDLY

Nordic PRO wall is a pure natural product which does not have any emissions of harmful gasses. Tested to M1 Emission classification of building materials.

The PRO wall is made using pure wood-fibres in a process with water and compressed under heat. The process is done without adding glue which would compromise emissions. The process uses the natural binding material Lignin which is a natural ingredient in wood. Thanks to being made by pure wood and being tested for low emission the product is recommended by the Asthma and Allergy Association in Norway.

SMOOTH WALLS FOR A PROFESSIONAL FINISH



Nordic PRO WALL is suitable for both painting and wallpapering.

FIRE PROTECTION UPGRADE

Scandinavian Trading Ltd offer our own fire-retardant paint and varnish for wood surfaces. The Nordic PRO Wall is already primed and only needs a two-coat paint finish to be completed. Our Nordic QVFR fire retardant in white and tinted colours are very suitable for a ready finished wall with fire classification B-s1,d0. We can also supply a fire retardant glue to use with the system.

Nordic QVFR is a two-component system QVFR-1 first coat and QVFR-2 second coat. Because our timber coating must be applied in a special way in order to achieve the specified fire rating, we advise using the downloads available in QR code on product label or from our website.

When you order Nordic PRO wall we can supply Nordic QVFR as part of the delivery for the required m2 of fire rated wall. The product is tested to several British standards, but is superseded by the new European Standard EN-13501 – Parts EN-13823 single burn test (SBI) and EN-11925-2 ignitability.

QVFR White has been tested to the new standard with resulting excellent classification B-s1,d0 (the S1 indicates minimal smoke emission, on a scale of S1 to S9, where S9 is highest smoke emission).

QVFR-2 White can be tinted as a decorative finish in pastel colours with up to 5% colouring.

QVFR-2 White is supplied in matt and satin finish. Please contact us to check what RAL colours are available.

INSTALLATION OF PRO WALL

The boards should acclimatise inside designated room for 24 hours before fitting. Boards to be stored horizontally and on a solid underlay.



1 TOOLS NEEDED FOR INSTALLATION.



2 MAKE SURE WALL IS STRAIGHT AND LEVEL.



3 LIFT BOARDS 5MM TO 10MM UP FROM FLOOR.



4 FIT LEFT TO RIGHT FROM A CORNER, OR FROM RIGHT SIDE OF A DOOR OPENING.



5 200MM BETWEEN FIXINGS IN VERTICAL BATTENS. USE SCREWS OR BRADS.



6 DOUBLE FIXING IN HORIZONTAL BATTENS.



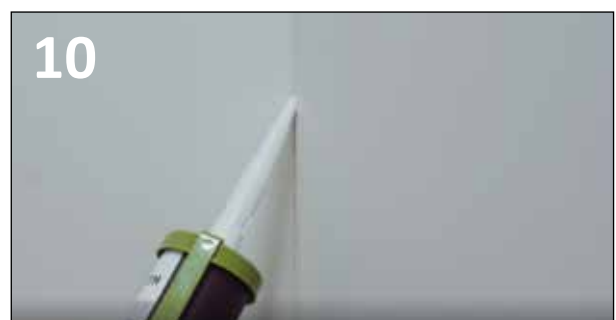
7 USE A 1MM STRING OF WOOD GLUE ALONG THE JOINT PROFILE. EACH PANEL MUST BE COMPLETELY FIXED TOP, BOTTOM AND SIDES BEFORE NEXT PANEL IS MOUNTED.



8 AFTER EACH BOARD IS FITTED, SAND LIGHTLY OVER JOINT BEFORE PAINTING OR WALL PAPERING.



9 THE WALL CAN BE FITTED WITHOUT INTERNAL CORNER TRIM. FOR EXTERNAL CORNERS, OUR FLEXILIST CAN BE USED.



10 ACRYLIC MASTIC IS RECOMMENDED FOR INTERNAL CORNERS.



**SCANDINAVIAN
TRADING**

Unit 2 Glen Court
Canada Road
Byfleet
Surrey, KT14 7JL
Tel: 01932 645050

sales@scandinaviantrading.co.uk
www.scandinaviantrading.co.uk



Asthma & Allergy
Association Norway